



Please Refer To The Following Steps:

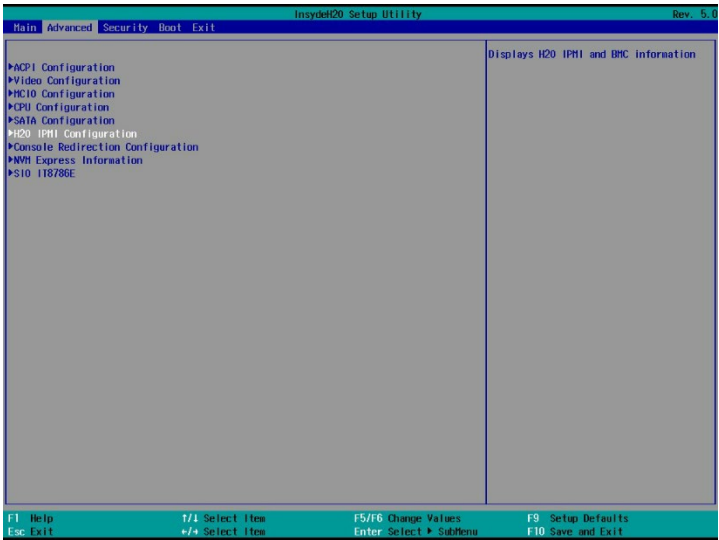
Step 1: Insert LAN cable to Network Socket



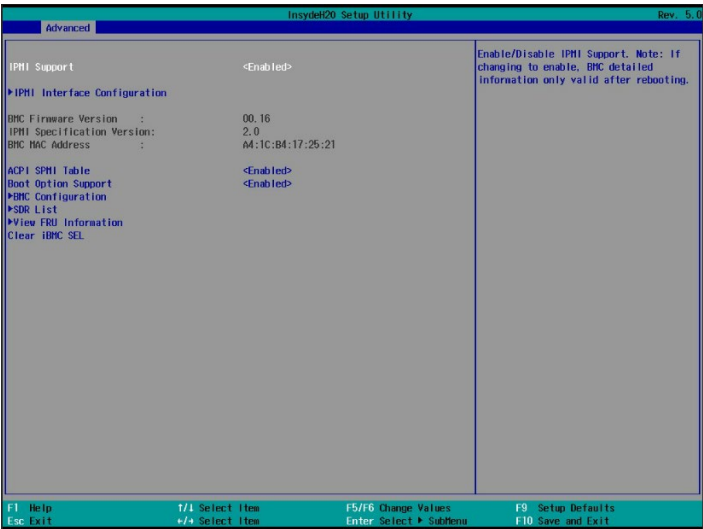
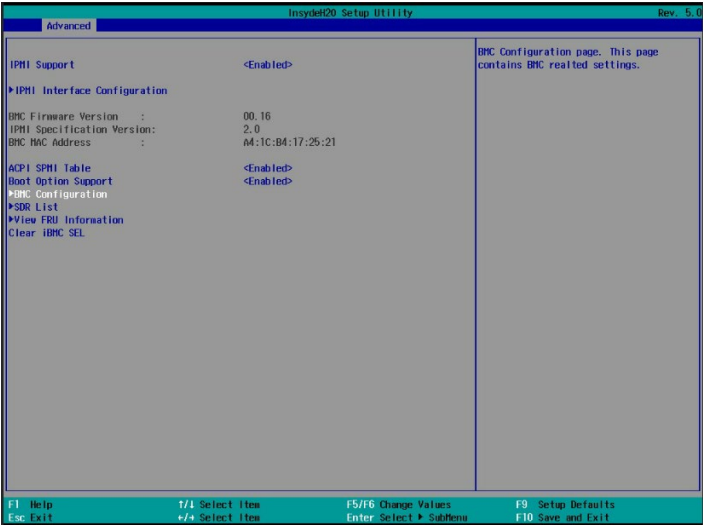
Step 2: Enter to BIOS to check BMC IP

=> Advanced

=> H20 IPMI Configuration



=> BMC Configuration



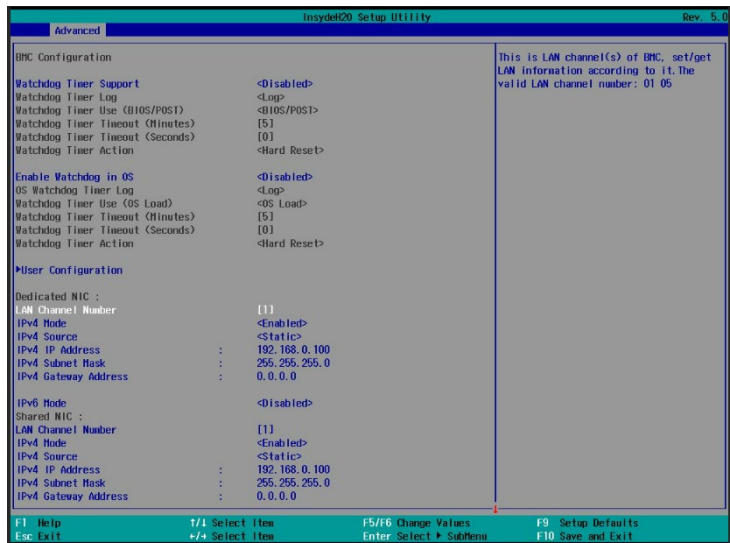
Step 3: Choose BMC LAN Channel to check BMC LAN IP

There are three BMC LAN Channels :

BMC Lan Channel	NIC Description	BMC Default IP
LAN 1	BMC Shared LAN	192.168.0.100

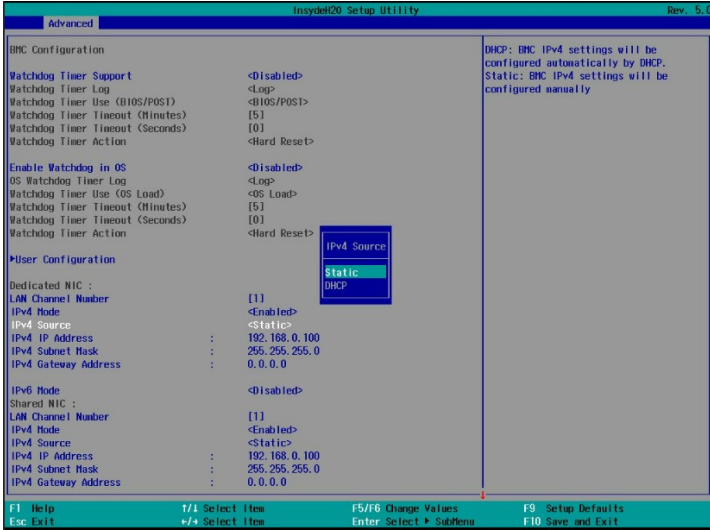
Choose BMC LAN Channel

- BMC LAN Channel 1

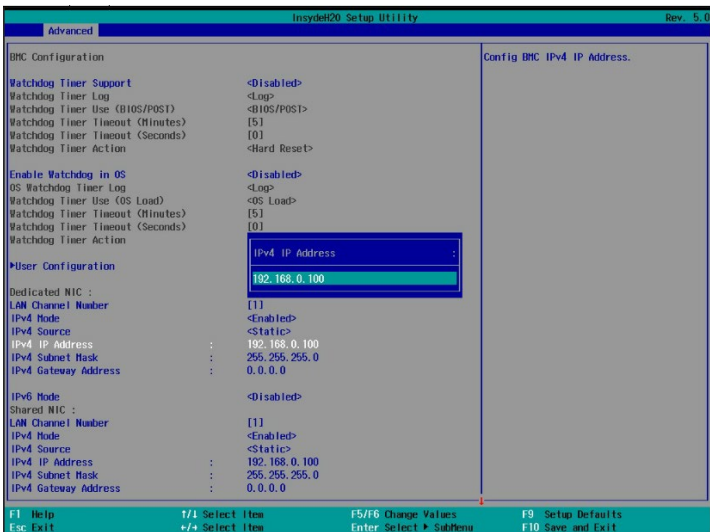


3.1 You can change your BMC LAN Setting

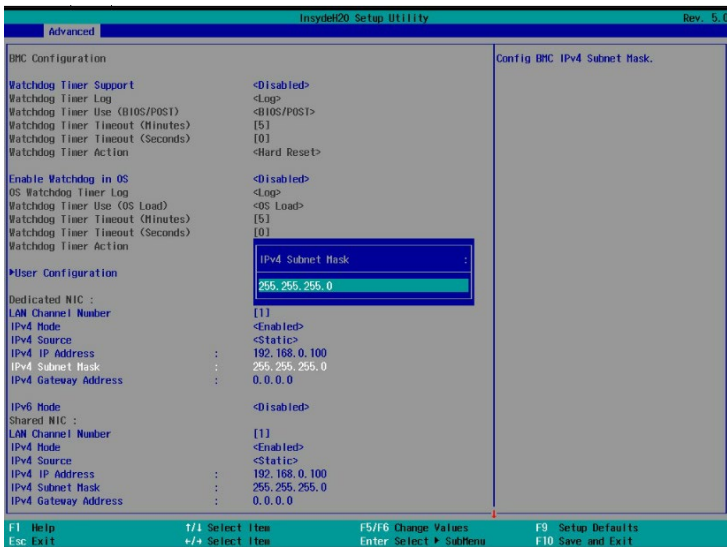
- BMC LAN Source: DHCP, Static



- BMC IP address



- BMC Subnet mask



Step 4: Setup Client Network Configuration

Configure Client IP to be in the same Network area

The screenshot shows a network configuration window titled "Wired". It has tabs for "Details", "Identity", "IPv4" (selected), "IPv6", and "Security".

IPv4 Method

- ☐ Automatic (DHCP)
- ☒ Manual
- ☐ Shared to other computers
- ☐ Link-Local Only
- ☐ Disable

Addresses

Address	Netmask	Gateway	
192.168.0.88	255.255.255.0		

DNS

Automatic ☒

Client IP and BMC IP need to be in same Network area

Example:

BMC LAN Channel 1 IP: 192.168.0.100 submask:255.255.255.0

Client IP : 192.168.0.88 submask:255.255.255.0

Step 5: Enter BMC IP to Browser to access BMC Web

BMC default USERID: dfi

BMC default Password: dfi

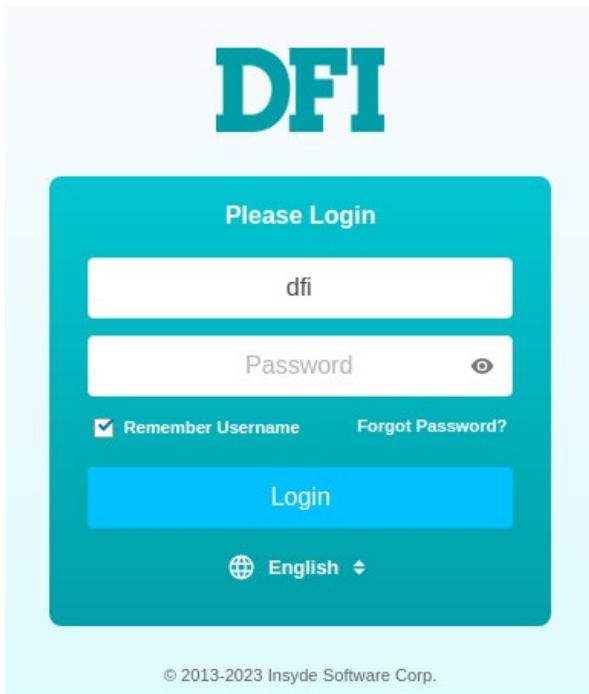
Web Browser List

Google Chrome 86.0.4240.193(latest stable version)

Mozilla Firefox Quantum 83.0 (latest stable version)

Microsoft edge 41.16299.15.0 (latest stable version)

Safari(on macOS Sierra) 11.0.2 (latest stable version)



The image shows a login interface for DFI. At the top, the letters 'DFI' are displayed in a large, bold, teal font. Below this is a teal rectangular box containing the login form. The box has the text 'Please Login' at the top. Inside the box, there are two input fields: the first contains the text 'dfi' and the second is labeled 'Password' with a small eye icon to its right. Below the input fields, there are two links: 'Remember Username' with a checked checkbox icon, and 'Forgot Password?'. A large teal button labeled 'Login' is positioned below these links. At the bottom of the box, there is a globe icon followed by the text 'English' and a small up/down arrow. Below the entire box, the copyright notice '© 2013-2023 Insyde Software Corp.' is visible.

English
Logout
Refresh
Help
About

System
Health
Configuration
Remote Control
Virtual Media
Diagnostics
Miscellaneous
Supervise

Dashboard
System Information
Firmware Information
CPU Information
DIMM Information
Current Users

Virtual Front Panel

Status
Power

Date & Time

2025 / 9 / 26
08 : 53
Friday
GMT+08:00

System Information

BMC Update: 3 minutes, 7 seconds
Active BMC Firmware Build Time: 09-Sep-25 09:34:38
Active BMC FW Rev: 00.35.00.0000
BMC Chipset: A372000-A3

Network

Dedicated NIC (1)
IP Address: 192.168.0.100
Subnet Mask: 255.255.255.0
Gateway: 0.0.0.0
IPv6 Static Address:

Temperature

Health	Name
Unknown	NVME000_TEMP
Unknown	NVME001_TEMP
Unknown	NVME002_TEMP
Unknown	NVME003_TEMP
Unknown	NVME004_TEMP
Unknown	NVME005_TEMP
Unknown	NVME006_TEMP

Voltage

Health	Name
OK	PSU1_VIN
OK	SVS1B
OK	SVS1C
OK	2V1
OK	5V
OK	12V

Screen Preview

Virtual Media

Device 1: No disk emulation set
Device 2: No disk emulation set
Device 3: No disk emulation set
Device 4: No disk emulation set
Device 5: No disk emulation set

Current Users

User Name	Type	IP Address
dfi	Web	192.168.0.88

DFI reserves the right to change the specifications at any time prior to the product's release. This user guide may be based on the product's revision. For more documentation and drivers, please visit the download page at www.dfi.com/downloadcenter, or via the QR codes to the right.

User Guide | BMC Web Setup

8